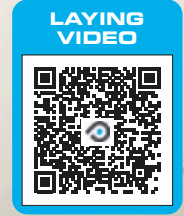




# PRODESO® MEMBRANE SYSTEM



**PATENTED**

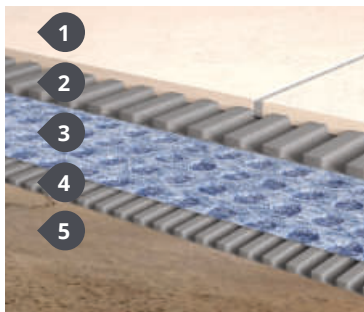


MEMBRANE  
AND PANELS

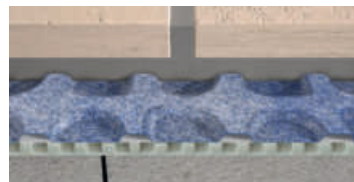
© 2020. All rights reserved by Progress Profiles, Printed in Italy

**Uncoupling and waterproofing system, particularly good for problematic screeds substrates.**

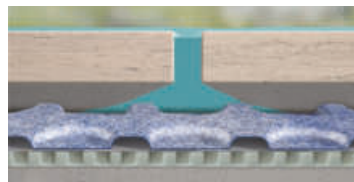
## PRODESO® MEMBRANE SYSTEM SECTION



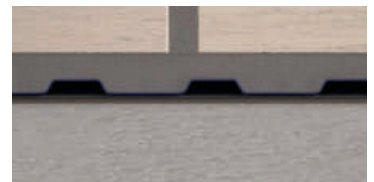
1. Ceramic / Stone or Porcelain Tiles
2. Adhesive
3. PRODESO®
4. Adhesive
5. Screed, Plywood, OSB etc.



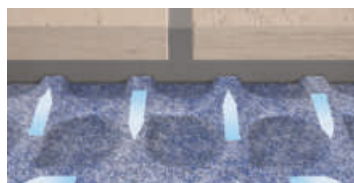
UNCOUPLING



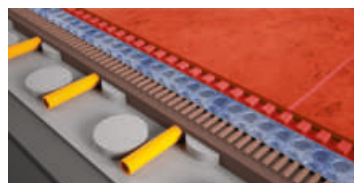
WATERPROOFING



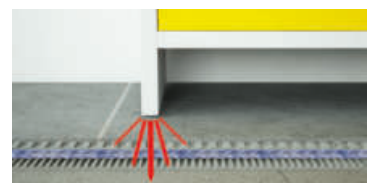
UNCOUPLING



VAPOR AND MOISTURE MANAGEMENT



FLOOR HEATING DISTRIBUTION



SUPPORT/LOAD DISTRIBUTION

It is an uncoupling and waterproofing membrane for problematic substrates, balconies, terraces and horizontal surfaces of any size without expansion joints in the screed before the laying of ceramic and natural stone. **PRODESO®** ensures the laying of the flooring and the waterproofing of the substrate also in case of old tiles, on cracked and not perfectly cured substrates, and therefore with possible vapour pressure.

# PRODESO® MEMBRANE

UNCOUPLING & WATERPROOFING  
MEMBRANE

## PRODESO® MEMBRANE

Article	H roll (m)	L roll (m)	Thickness (mm)	Rolls/Pallet	€/m	€/Roll	€/Pallet
PDES 3530/EN	1	30	3,5	8	19,29	578,70	4629,60
PDES 3505/EN	1	5	3,5	56	22,46	112,30	6288,80

## WHY USE PRODESO® MEMBRANE SYSTEM

**Time Efficient:** PRODESO® Membrane reduces drastically the installation times because from the installation of the membrane up to the laying of flooring you can work without interruption.

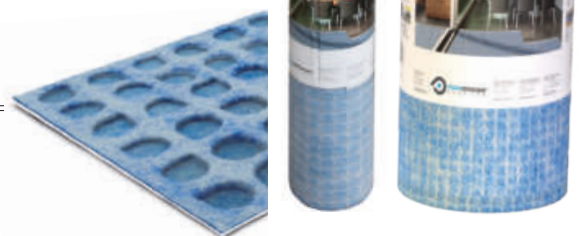
**Flexible:** it is suitable for every types of subfloor including very large surfaces both indoor and outdoor.

**Safe:** it is suitable for substrates with cracks as it does not transmit tension of the substrate to the tile coverings and vice versa. It is also suitable on substrates not perfectly cured since it allows the vapour management.

### WARNINGS

Do not lay tiles with a size less than 5 x 5 cm. The technical and application details can be found in the **PRODESO® MEMBRANE SYSTEM** brochure. For other informations not described in the brochure **PRODESO® MEMBRANE SYSTEM**, refer to the technical department.

H 3,5 mm



**PROBAND 150/250** is a waterproofing polyethylene tape with nonwoven polypropylene fabric on both side that guarantees high adhesion to the support.

## PROBAND 150/250

ROLLS IN HDPE AND PP

### PROBAND 150/250

Article	H roll (m)	L roll (m)	Thickness (mm)	Rolls/Pallet	€/m	€/Roll	€/Pack.
PRBPE 1507	150	7,5	0,42	16	5,70	42,75	684,00
PRBPE 1530	150	30	0,42	6	4,18	125,40	752,40
PRBPE 2530	250	30	0,42	3	7,68	230,40	691,20

For the indicative consumption of proband koll AB during the installation of the PROBAND, consult the technical data sheet of PROBAND 150/250



### AREA OF USE

- **Use** - Terraces, balconies and outside surfaces of any dimension, bathrooms, showers, swimming pools and tanks. To realize waterproofing joints between floor and wall and along two adjacent rolls of **PROFOIL**, **PRODESO® MEMBRANE SYSTEM** and **PRODESO® HEAT/GRIP SYSTEM**
- **Don't use** - On bituminous coverings, over thermal-insulating layer and lightweight screed. With adhesives containing solvents.

### WARNINGS

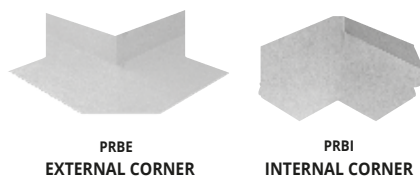
Store in a cool and dry place avoiding direct sunlight and sources of heat. Read the data sheet before applying; in case of special applications call the technical department

### RECOMMENDED ADHESIVES FOR THE LAYING OF PRODESO® MEMBRANE (grey color)

<p><b>H40 NO LIMITS</b> H40 REVOLUTION H40 EXTREME</p>	<p><b>SUPERFLEX K77</b> POWERFLEX K50 LITOSTONE K99</p>	<p><b>FLEXBOND C2S1</b> FLEXBOND LIGHT C2S1 WETBOND RAPID C2F</p>	<p><b>GRIGOKOLL TEX</b> GRIGOKOLL MAX GRIGOKOLL VELOX</p>	<p><b>CERAM 255 STARFLEX</b> CERAM 255 EASY S1 CERAM 270 MULTIFLOW</p>	<p><b>ULTRAGRES 440</b> ULTRAGRES FLEX ULTRAGRES FAST</p>	<p><b>PERICOL R-FLEX</b> PERICOL EXTRA FLEX PERICOL FLEX</p>
<p><b>335 MAXI S</b> 335 SUPER FLEX 325 RAPID FL</p>	<p><b>ARDEX X 78</b> ARDEX X 90 OUTDOOR ARDEX AF 495</p>	<p><b>MUREFLEX MFK 45</b> ADESIVO FBS 75 MAXIMO M 41</p>	<p><b>RT UNIVERSAL</b> RT HI TECH RT RAPID FLEX</p>	<p><b>SEYFLEX S1</b> SEYULTRA T TIXOSEY</p>	<p><b>KRISTAL C2TE</b> EXTRA C2S1</p>	<p><b>AZ 59</b> RAPID MAXI SPECIAL ONE</p>
<p><b>CERMIPLUS 2.0</b> CERMIPLUS XL FLEX 2.0</p>	<p><b>FORTEM</b> MAXIM</p>	<p><b>BENFERFLEX+S1</b> BENFERFLEX C2 BENFERFLEX + FAST-S1</p>	<p><b>F.55 CERMONO PLUS</b> F.55 CERFIX F.55 CERMONO RAPIDO</p>	<p><b>EXTRA 30 MAXI</b> ADEFLEX GREEN S1 EXTRA 30 POWER</p>	<p><b>KERAFLEX EASY</b> ULTRALITE S1 KERAFLEX MAXI S1</p>	

## PREFORMED CORNERS

Internal and external preformed corners in polyethylene provided on both side with nonwoven polypropylene fabric that guarantees its adhesion to the support.



PRBE  
EXTERNAL CORNER

PRBI  
INTERNAL CORNER

### PREFORMED CORNERS

Article	H mm	L mm	Pc/Pack	€/Pc	€/Pack
PRBI	60	120	10	8,23	82,30
PRBE	60	120	10	8,23	82,30

**Don't use** - On bituminous coverings, over thermal-insulating layer and lightweight screed. With adhesives containing solvents. adhesive.

## PROBAND BU

BUTYLE TAPE

**PROBAND BU** is an adhesive tape in butyle provided on one side with non-woven polypropylene that guarantees high adhesion. use for the Realization of perimeter junctions in case of bituminous coverings, PVC, wood, polycarbonate, glass, plastic and metal on balconies, terraces and external surfaces of any size.



### PROBAND BU

Article	H Roll (mm)	L Roll (m)	Thickness (mm)	Rolls/Pack	€/m	€/Roll	€/Pack
PRBBU 7515	75	15	1	8	3,91	58,65	469,20

**WARNINGS: Don't use** - On dirty, incoherent and wet surfaces.

## PROBAND KOLL

SINGLE-COMPONENT HYDROPHOBIC ADHESIVE

**PROBAND KOLL** is a single-component hygro-hardener adhesive for the sealing of PROBAND 150/250 on PRODESOS® MEMBRANE.



### PROBAND KOLL

Article	Kg/Pack	Pack/Pallet	kg/Pallet	€/kg	€/Pack	€/Pallet
PRBKL	6	100	600	10,97	65,82	6582,00

For the indicative consumption of proband koll during the installation of the PROBAND, consult the technical data sheet of PROBAND 150/250

#### AREA OF USE

- **Use** - For the sealing of the tape PROBAND 150/250 with PRODESOS® MEMBRANE and PRODESOS® HEAT/GRIP MEMBRANE on balconies, terraces, bathrooms, kitchens, saunas and external surfaces of any size.
- **Don't use** - On bituminous coverings, to glue tiles and to waterproof cement based support. Do not use outside with PRODESOS® HEAT/GRIP MEMBRANE

## PROBAND KOLL AB

BICOMPONENT HYDROPHOBIC ADHESIVE

**PROBAND KOLL AB** is a bicomponent hydrophobic adhesive for the sealing of PROBAND 150/250 on PRODESOS® MEMBRANE and PRODESOS® HEAT/GRIP MEMBRANE.



### PROBAND KOLL AB

Article	Kg/Pack	Pack/Pallet	kg/Pallet	€/kg	€/Pack	€/Pallet
PRBKLAB	15	27	405	12,13	181,95	4912,65

For the indicative consumption of proband koll AB during the installation of the PROBAND, consult the technical data sheet of PROBAND 150/250

#### AREA OF USE

- **use** - Balconies, terraces, bathrooms, kitchens, saunas and external surfaces of any size.
- **Don't use** - as waterproofing sheet, to glue tiles and PRODESOS® family membranes, PROFOIL and PROFOIL PANEL.

## PROMEMBRANE KOLL

CEMENTITIOUS ADHESIVE

**PROMEMBRANE KOLL** is a C2ES1 class cementitious adhesive, with high workability and prolonged adjustability, specially designed to bond all the membranes of the "PRODESOS®" family, even overlapping and on floor heating systems and the PROFOIL membrane.



### PROMEMBRANE KOLL

Article	Kg/Pack	Pack/Pallet	kg/Pallet	€/kg	€/Pack	€/Pallet
PRMKL	25	25	625	1,45	36,25	906,25

Sold exclusively by the pallet.

**WARNINGS: Do not use** PROMEMBRANE KOLL for bonding natural or recomposed stone sensitive to moisture. Consult the technical data sheet before application; in case of particular applications, it's advisable to consult the technical department.

## PROBAND FIX

MOISTURE-CURE SEALANT

**PROBAND FIX** is a moisture-cure sealant with high adhesion and elasticity. It guarantees the adhesion of PROBAND 150/250 with aluminium frames, plastic and metal and between adjacent sheets of PROFOIL. Don't use On bitumen membranes. To seal proband with PRODESOS®.

MOISTURE-CURE SEALANT  
pack. of 12 cartridges - B (white) - G (grey)

Article	Cartridge lm	€/Pc	€/Pack.
PRBFXB	290	17,64	211,68
PRBFXG	290	17,64	211,68



GUN FOR MOISTURE-CURE SEALANT CARTRIDGE

Article	Pc/Pack	€/Pc
PRBFXGUN	1	352,60



MOISTURE-CURE SEALANT CARTRIDGE  
pack. of 12 cartridges - B (white) - G (grey)

Articolo	Cartuccia ml	€/PZ	€/scatola
PRBFXUB	600	34,61	415,32
PRBFXUG	600	34,61	415,32

